

Alaska Department of Fish and Game

Habitat Section
Southeast Region



186-15-10550-2005-3022-4018 Tributary 1

ADDITION

Water body name:

Survey date: 8/20/2024

Quad: Icy Bay D2, D3

Species & Lifestage:

Upper Reach Latitude: 59.985519 **Longitude:** -141.545762

Survey crew: NJ, CD, FC

Lower Reach Latitude: 59.984483 **Longitude:** -141.541867

Findings: We surveyed this uncataloged stream using a backpack electrofisher and GPS and captured juvenile coho salmon. Wide stream with gravel substrate and intermittent step pools; connects to several ponds throughout. Grade increases moderately at waypoint 1064 but fish habitat likely continues during higher flows. Fish habitat also likely continues up the tributary found at waypoint 1063, but we were unable to survey due to time (Table 1; Figures 1–3).

Recommendations: Add this uncataloged stream to the anadromous waters catalog for rearing coho salmon (Figure 4).

Nomination: Pending

Table 1.–186-15-10550-2005-3022-4108 tributary 1 survey data.

Waypoint	Latitude	Longitude	Notes	Stream Width ft	Stream Substrate	Habitat Features	Gradient %	Sample Effort	Sample Results
1050	59.984390	-141.541990	Main channels splits. Fish habitat seems to continue upstream on both channels. Will investigate tributary on river right on another day, going up river left tributary to investigate.		Small Gravel		2-4		
1057	59.984546	-141.542220	More water than the adjacent stream.	10-12	Large Gravel		2-4	EF	2 CO
1058	59.984685	-141.542794	Small isolated pond on river right side of main channel. Did a quick shock and found no fish in pond. Stream still great habitat.		Large Gravel		2-4		
1059	59.985213	-141.5436291	Stream becomes more cobble and width stays approximately the same, 8 to 10 feet. Still no fish barrier scene. Great fish habitat. Channel is becoming slightly incised at this point.	8-10	Cobble		2-4		
1060	59.985230	-141.5438418	Two Coho caught/seen just below 6 inch step fall. Good fish habitat. Water flow has increased in velocity and substrate still cobble.		Cobble		2-4	EF	2 CO
1061	59.985216	-141.544346	Just above last waypoint channel turns into large ponded water that may split into two braids and channel up again further upstream.		Sand		2-4		
1062	59.985380	-141.545594	Small channel enters large kettle pond. Channel continues at gradient of approx 3% and narrows to 2 ft.		Small Gravel		1-2	EF	No Fish
1063	59.985542	-141.545497	Another channel enters pond, lots of gravel.		Large Gravel		1-2	EF	2 CO
1064	59.985606	-141.5461871	Notable increase in gradient. Water level drops and dries out but still some standing water at this point. Unsure if gradient continues to increase further up but could be suitable habitat at higher flows.		Cobble		6-8	EF	No Fish



Figure 1.—Juvenile coho salmon caught at waypoint 1057.



Figure 2.—Step pool at waypoint 1060, looking upstream.



Figure 3.—Upstream at waypoint 1064.

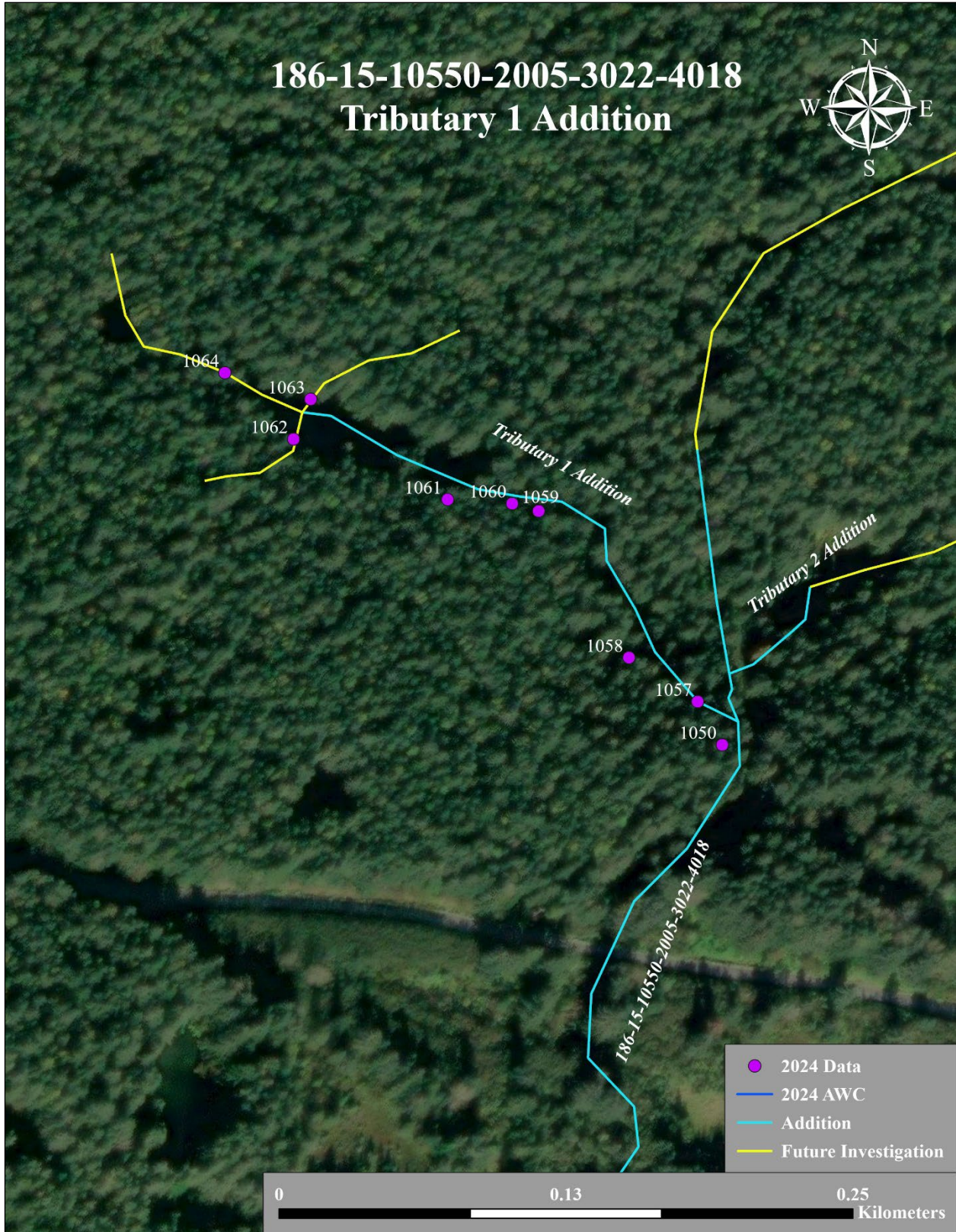


Figure 4.—186-15-10500-2005-3022-4018 tributary 1 addition map.